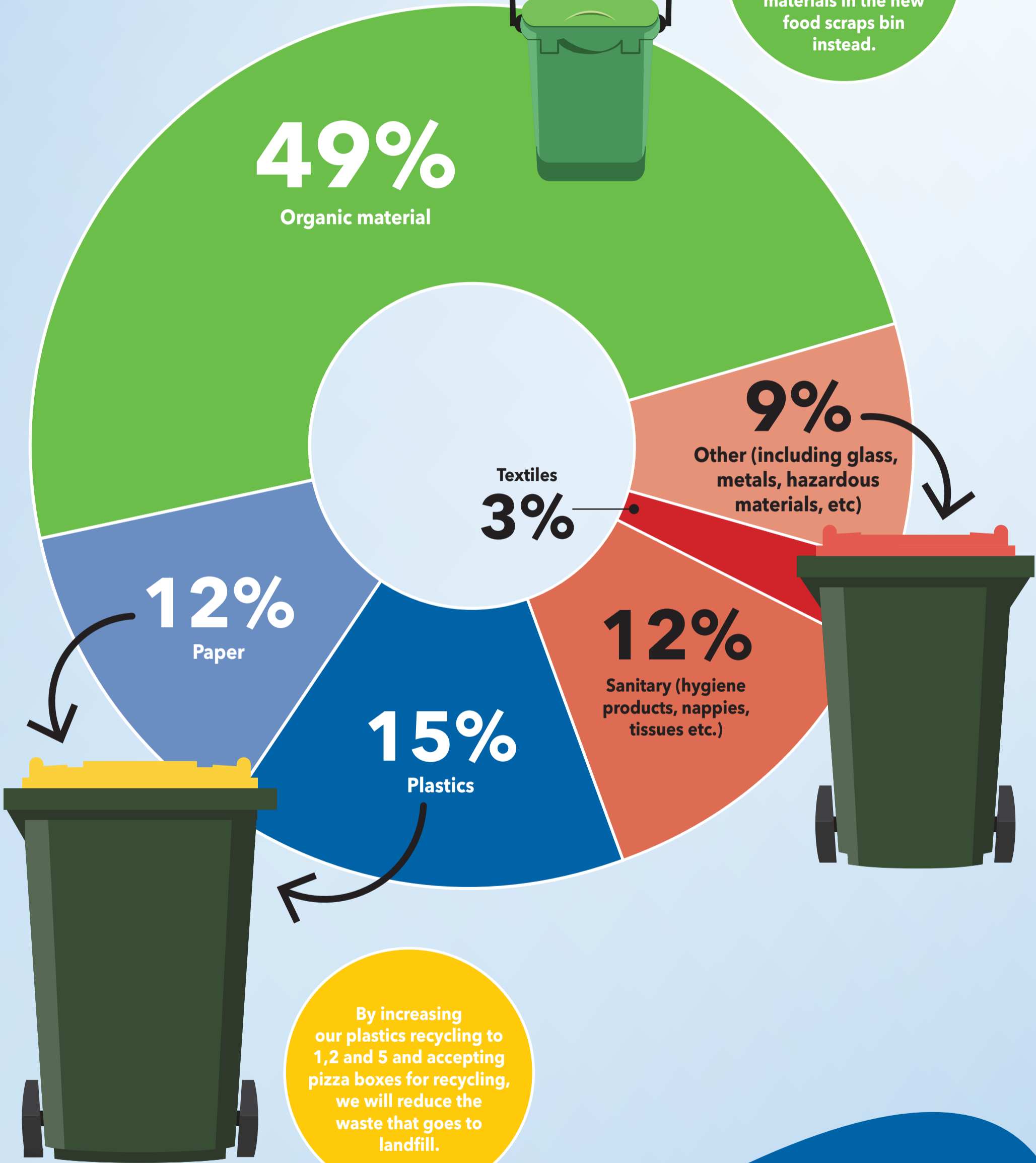


# What makes up our rubbish?

With the new service, almost 50% of our landfill waste can be diverted by composting organic materials in the new food scraps bin instead.



By increasing our plastics recycling to 1,2 and 5 and accepting pizza boxes for recycling, we will reduce the waste that goes to landfill.



**Hamilton City Council**  
Te kaunihera o Kirikiriroa

\*2017 data