

WASHING CLOTH NAPPIES AT HOME

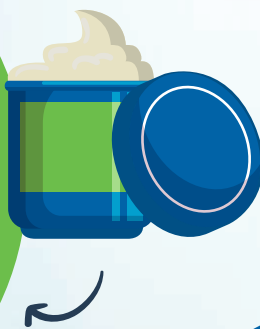


PREPARING A CLOTH NAPPY FOR WEAR

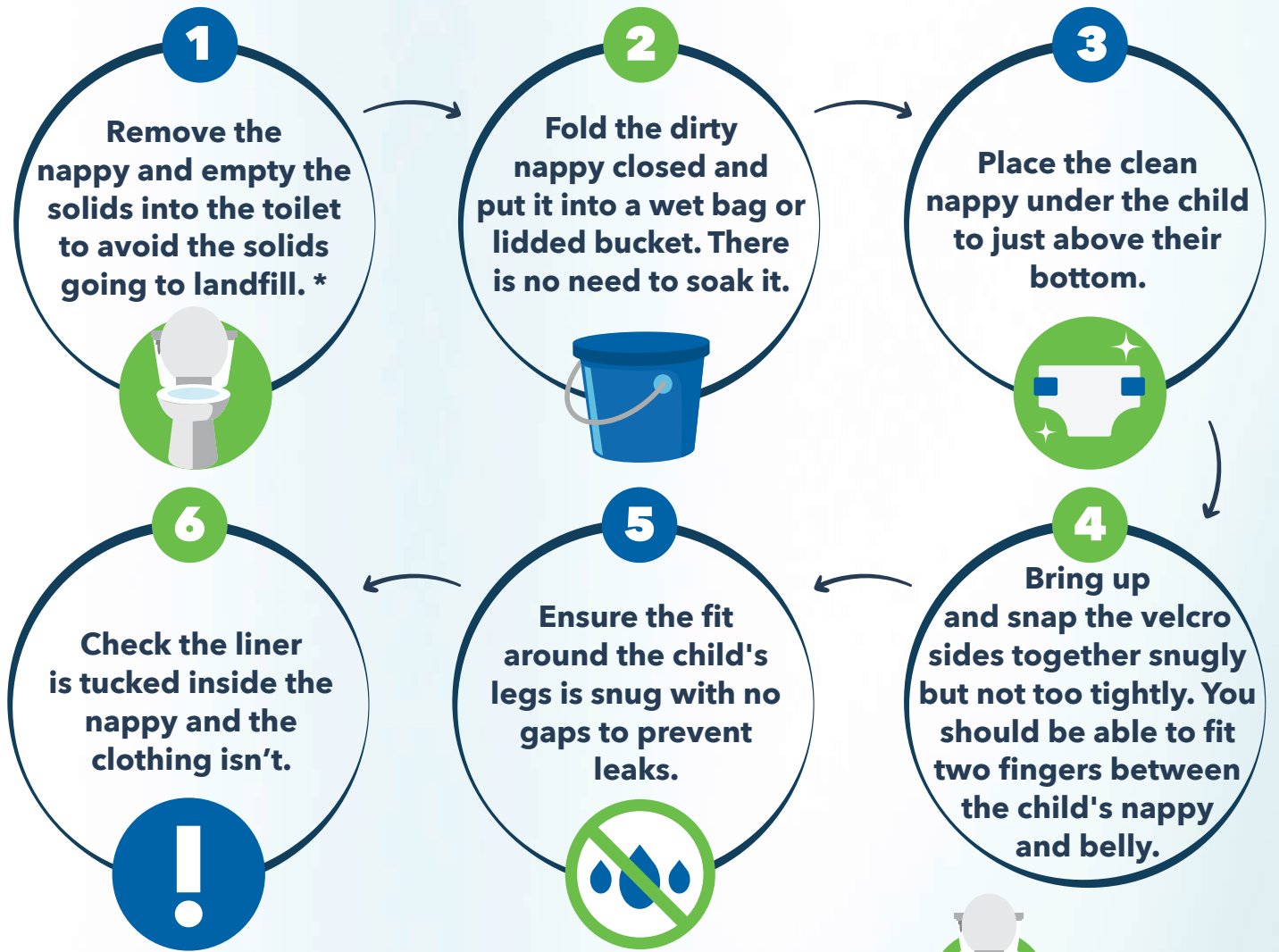


Most cloth nappies tend to have softly lined inners with water-resistant outer covers.

Both disposable and reusable nappy liners are great for catching solids and protecting cloth nappies from any oily creams.



FITTING & CHANGING CLOTH NAPPIES



***How you do this depends on how much time and space you have. So, you can either:**

- Put the soiled liner into a lidded bucket to deal with later.
- Rinse off what you can into a bucket then flush it away.
- Rinse off what you can directly into the toilet.



REMEMBER disposable liners are rubbish and should not be flushed down the toilet.



**Hamilton
City Council**
Te kaunihera o Kirikiriroa